

IMS – Responding to Emergencies at PSFDH

Presented By:

Michael Cohen

Presented To:

Board of Directors

Date:

March 24, 2026

Background

- Like most hospitals, PSFDH has policies and procedures designed to respond to emergencies.
- Our Emergency Preparedness Process (EPP) is well established, it is a requirement under Accreditation, and practiced regularly (mostly table-top).
- Our EPP helps guide our structured response to specific situations, however, it does not identify the internal management structure needed to manage an incident.
- IMS provides this structure.

Incident Management Structure

- Developed in California following poor responses to large scale & complex events (wildfires/earthquakes):
 - Poor communication.
 - Unclear chain of command.
 - Poor/uncoordinated systemic planning.



Incident Management Structure

- IMS provides a consistent structure to ensure clear leadership, structured response and a method of organizing when responding to an emergency.
- We can have a swift response, but if not organized our policies will not be effective as they could be.
- Recent QRCA.



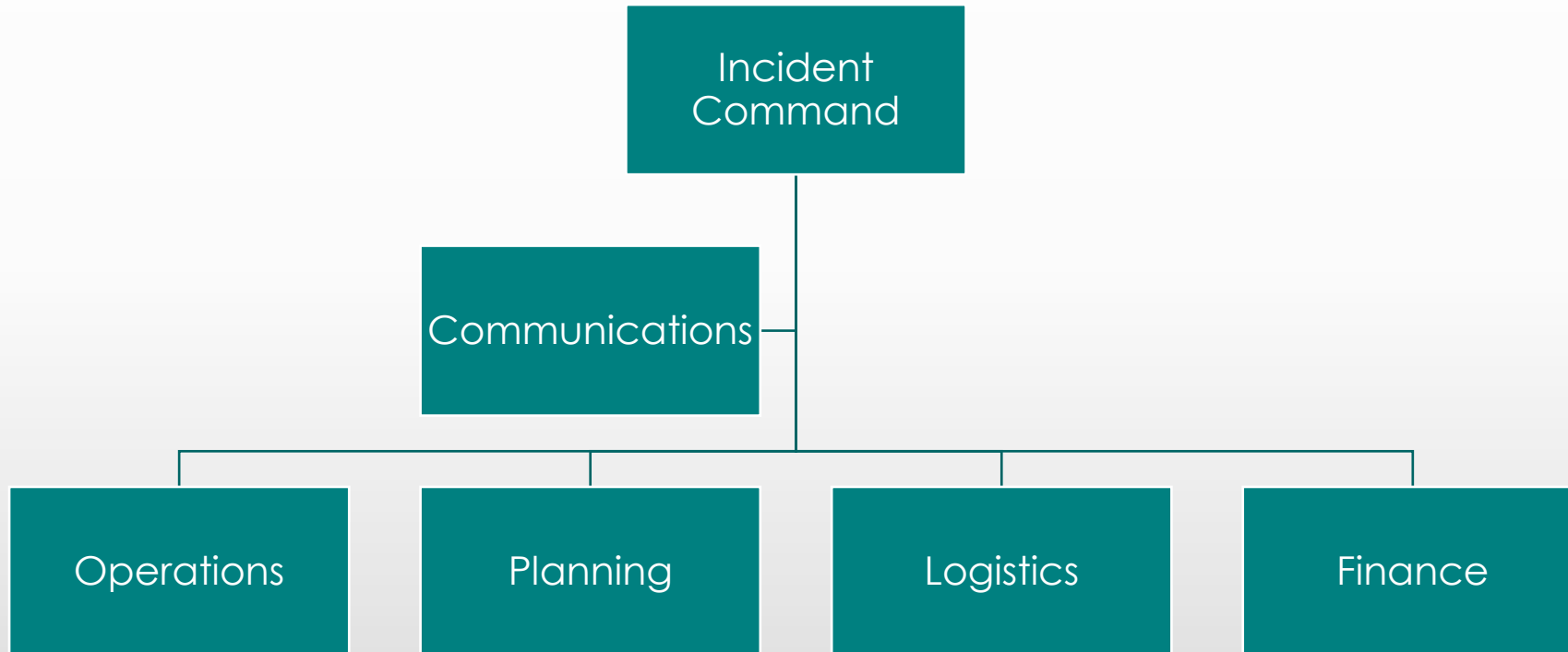
Incident Management Structure

- IMS framework is agnostic and flexible to adapt to any emergency situation requiring a structured response:
 - Infrastructure event – e.g. flood, loss of power, IT systems failure.
 - External disaster – e.g. mass casualty.
 - Patient related – code yellow (missing patient).
 - CBRN (chemical, biological, radiological, nuclear).
 - Hospital evacuation (e.g. due to code red).





Incident Management Structure



Incident Management Structure

Key Features:

- Activation.
- Leadership – typically the first “responder”.
- Scalability.
- Unified command structure.
- Standardized roles.



IMS Supports

- Emergency Response policies.
- Business Continuity.
- Code policies.
- Crisis Communications.

Questions?